

Seaeye Panther-XT Plus

The customisable Seaeye Panther-XT Plus is designed as the benchmark for electric work ROVs and challenges heavier and more costly hydraulic vehicles, particularly where deckspace is at a premium.

Thanks to its 500V eight horizontal thrusters and dual power supplies, the Seaeye Panther-XT Plus benefits from exceptional handling and with speeds over 4 knots boasts a high power to weight ratio to that of its rivals yet maintaining an observation class footprint.

This RS DIVING high power ROV is accommodating Schilling Orion manipulators as well as a wide range of sensors and interchangeable heavier duty tooling packages. The Seaeye Panther-XT Plus is highly suited for work tasks including drill support, pipeline survey, salvage, cleaning, dredging and IRM to depths of 1000 metres.

The stainless steel TMS type 8 uses a bail arm to spool up to 200m of tether on and off a drum controlled by the ROV Pilot. A snubber rotator assembly allows the TMS to be locked into position and rotated for a safe and smooth transit through the A-Frame.

A Magneto-resistive compass and a solid-state rate sensor are provided, for superior azimuth stability.



MAIN DETAILS

ROV :	Remotely Operated Vehicle
Owner	RS DIVING CONTRACTOR GmbH
Serial No.	(37258)
Product	Seaeeye Panther-XT Plus 1000 m rated
Producer	Saab Seaeeye Ltd.
Supervising authorities	Lloyds Register

TECHNICAL DETAILS

Depth rating	1000 msw
Length	2140 mm
Height	1217 mm
Width	1060 mm
Launch weight	800 kg
Forward speed	4 knots
Thrust forward	353 kgf
Thrust lateral	248 kgf
Thrust vertical	105 kgf (std)
Payload	150 kg

ROV SENSORS

Sonars	<ul style="list-style-type: none"> - Tritech Super SeaKing scanning sonar - Blueview M900-130 2D imaging sonar - Tritech Altimeter PA 200, auto altitude
--------	-------------------------------------------------------------------------------------------------------------------------------------------------------------------------------------------

ROV TOOLS

Manipulators	<ul style="list-style-type: none"> - Schilling Orion 7P Work Class Arm (proportional control) with 7.8" PA Gripper - Schilling Orion 4R Work Class Arm (rate control) with 7.8" Gripper
Camera	<ul style="list-style-type: none"> - 4 x Colour Camera (Manipulator Camera) - 1 x Black & White Camera - Recorder with geo referenced overlay
Further tools	<ul style="list-style-type: none"> - Rotary Disc Cutter - Cleaning Brush - Cygnus UT Gauge (Mk5 2000m) - CP Probe

ROV CONTROL CABIN / WORKSHOP CONTAINER

Dimensions	20ft Split A60 Safe Area Container 20ft x 8ft wide x 9ft high, 4mm
Isolation	Walls, floor and ceilings insulated and lined to SOLAS A60 fire rating
Electrics	Electrical power distribution system for cabin, ROV system and LARS including 12off twin 220V power sockets (or 110V please specify mix)
Interior	Semi Highback Pilot Seat 17" rack mountable Monitors

LAUNCH AND RECOVERY SYSTEM (LARS)

LARS	<ul style="list-style-type: none"> - Hydraulic winch unit (700m capacity) 2.2 Tonne load rating - Hydraulic Power Unit & controls - Lloyds witnessed load testing - Snubber rotator unit for safe transfer the TMS smoothly through the LARS - Certified to EN12079 for offshore lifting - Technical manual & certification - High folding platform in front of the LARS for additional work space
------	---------------------------------------------------------------------------------------------------------------------------------------------------------------------------------------------------------------------------------------------------------------------------------------------------------------------------------------------------------------------------------------------------------------------------------------------------------------------------------

TETHER MANAGEMENT SYSTEM (TMS)

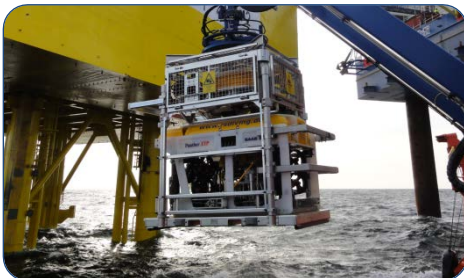
Description	For work at greater depths, in higher currents and for faster travel to and from the working zone, as well as greater protection of the vehicle through the splash zone, it is usual to deploy the Panther-XT Plus with a TMS
Construction	<ul style="list-style-type: none"> - Stainless Steel TMS Frame - Bailing arm style TMS with 200m of 20.6mm tether capacity - Easy Access to all Sub-Assemblies for easy maintenance & inspection

TRANSPORT DIMENSION

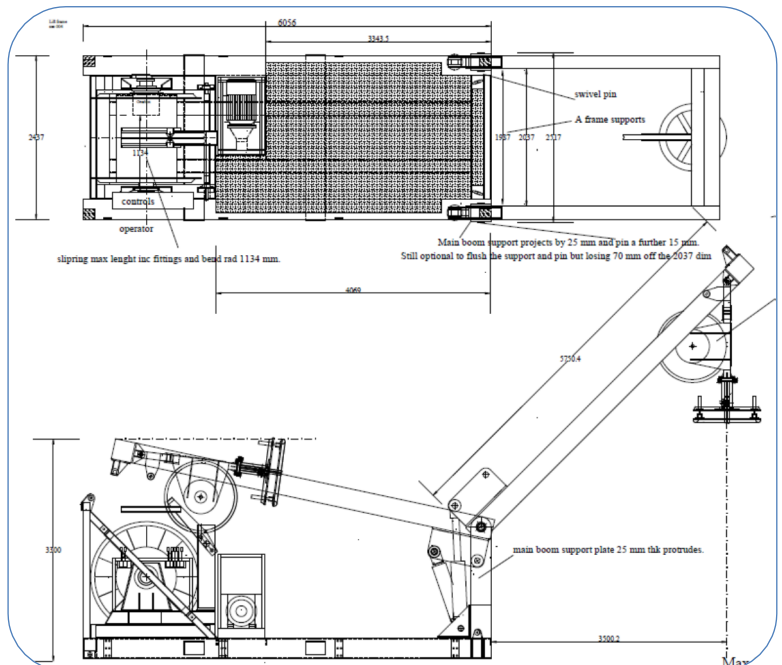
Container	1x 20"-Container á 10.500kg (L 6,06m x B 2,45m x H 2,75m)
ROV LARS	17.200kg (6,06m x 2,45m x 3,58m)



ROV Control Cabin



TMS



A-Frame LARS