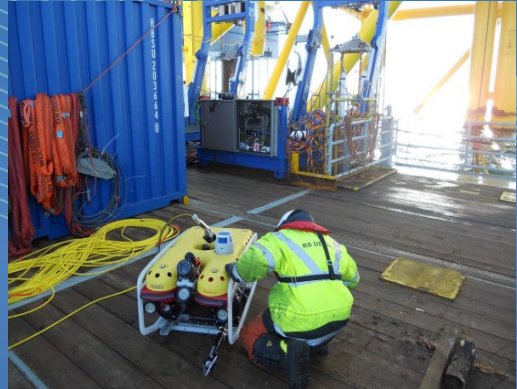


Falcon ROV 300m Depth Rated

The Falcon ROV system is configured to be a free swimming ROV platform. It is adaptable, reliable and can perform varied subsea tasks from GVI's, CVI's and Diver Support to CP surveys and light cleaning duties.

Various tooling packages can be integrated with the Falcon (listed below). The Seaeeye Falcon is the choice of many leading operators for capability, versatility and the ability to get the job done. Lightweight and portable, they go where they're needed - inshore, offshore, down tunnels or for remote location operations where portability and durability mean success.

Available with a choice of options, tools and accessories, such as rotary cleaning brushes, CP probes, pipe & cable trackers and ultra-sonic thickness gauge to extended tether hand winches and manipulator skids, Seaeeye Falcons make an ideal platform for achieving numerous intricate and demanding subsea applications.



SPECIFICATION ROV SEAEYE FALCON

Main Details	
ROV	Remotely Operated Vehicle
Serial No.	12238
Product	ROV SEAEYE FALCON – 300m rated
Producer	Saab Seaeeye Ltd 20 Brunel Way, Segensworth East, Fareham, Hampshire, PO15 5SD, United Kingdom Phone: +44 (0) 1489 898000 Fax: +44 (0) 1489 898001 E-Mail: rovs@seaeeye.com
Supervising Authorities	D_TÜV, Germanischer Lloyd
Technical Details	
Length	1000mm
Length of Ante Chamber	1000mm
Height	545mm
Width	600mm l
Thrust Forward	48kg
Thrust Lateral	28kg
Thrust Vertical	12kg
Weight	65kg
	Payload 10-15kg
Video Overlay includes as Standard	
	Compass heading
	Depth in meters or feet
	Camera tilt platform position
	Auto function status
	Date and time
	Turn counter
	Free designable user screens
	Facility to export data to survey
	CP reading (optional)
	Odometer count (optional)
Power Requirements	
	220-240Vac single phase 16amp

Standard Falcon supplied with	
5 x	MCT1 thrusters
1 x	Colour camera
1 x	Monochrome camera
1 x	Super Sea King sonar
1 x 300m	
1 x 200m	Low drag tether
1 x 100m	
1 x	Full LED light, incl. 3 rd LED lamp
1 x	Grip stick, incl. rope cutter
Standard Surface Equipment	
1 x	Power supply unit, incl. pilot monitor and hand control unit
1 x	Desktop system for video backup, including video editing, survey and additional tasks
2 x	LCD monitors
1 x	Touchscreen
1 x	Trackball
1 x	USB video grabbers
1 x	Wireless router
1 x	Various software
1 x	Digital video recorder
1 x	Fully network capable, e.g. wireless streaming of ROV pictures in real-time, complete network access
1 x	Laptop as complete backup system
1 x	Remote spares package and tool set
Special Features for RS Diving	
1 x	300m 11mm cable / 20m decks lead
1 x	Extended tether hand winch
1 x	Lock latch system
1 x	Rear camera
1 x	Five function manipulator skid
1 x	ROV cage for subsea deployment
1 x	CP probe



LED Lights



Five Function Manipulator Skid



Surface Control

Specifications subject to change at owner's discretion